

Device Configuration Guide

Digium Card



All Rights Reserved

Copyright © 2005

The use, disclosure, modification, transfer, or transmittal of this work for any purpose, in any form, or by any means, without the written permission of the copyright holder, is strictly forbidden.

*VoiceDirector Device Configuration Guide
Digium Card*

Disclaimer

The content of this manual is subject to change without notice and should not be construed as a commitment by the manufacturer, distributor, or service provider. This manual is furnished for informational use only and the manufacturer, distributor, or service provider assumes no responsibility for any errors or inaccuracies that may appear herein.

Any services provided through this equipment are not intended to replace or be a substitute for primary line voice services or Plain Old Telephone Service ("POTS") and are not meant to provide guaranteed Automatic Number Identification or Automatic Location Information capabilities associated with 911 or E911 services or to permit access to 411 directory assistance services. The manufacturer, distributor, or service provider will not be liable for any damages, expenses, liabilities, risks, or harms arising out of or related to the services provided through this equipment.

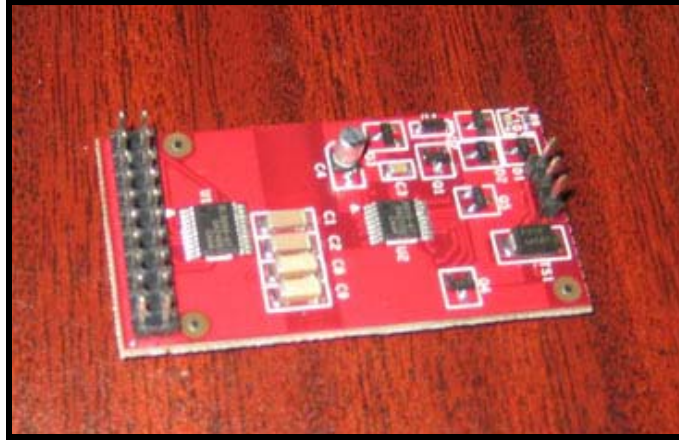
04.24.2006

Table of Contents

1. Digium Card Installation Instructions 1

1. Digium Card Installation Instructions

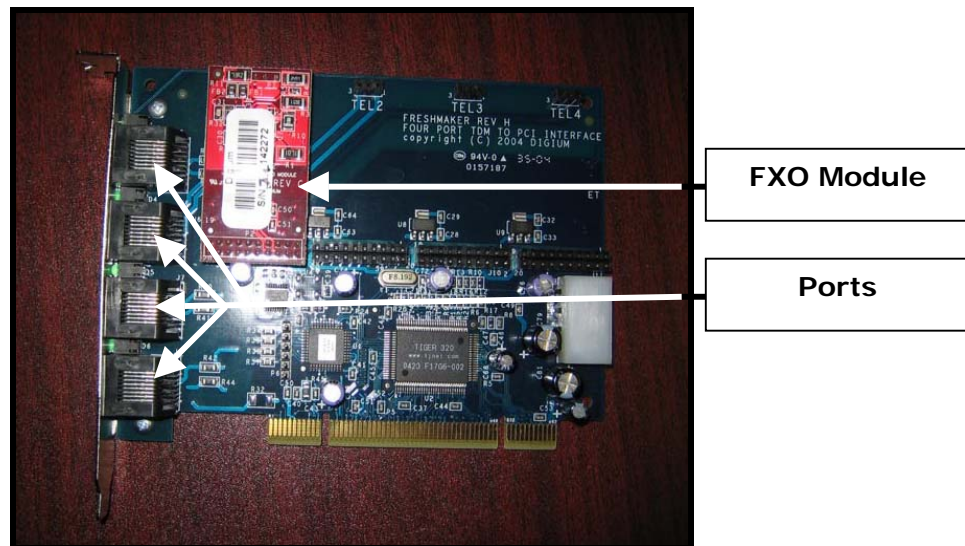
The Digium card comes with two modules attached: FXS (green) and FXO (red). You will only need the FXO module for use with VoiceDirector.



FXO Module

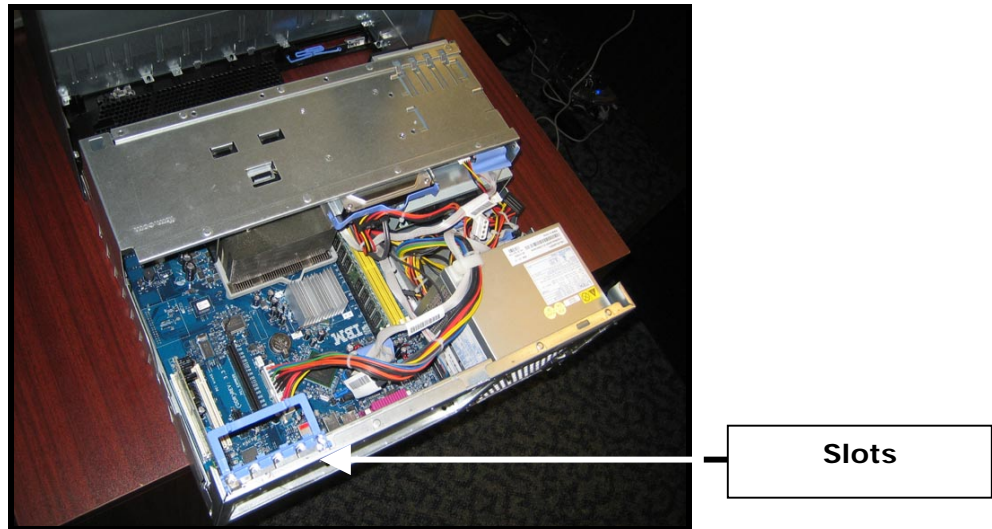
To install the Digium card onto your PC:

1. On the Digium card, remove the FXS (green) module by pulling it up and off the card.
2. If the FXO (red) module (shown below) is not already positioned adjacent to the ports on the outside of the card, remove it and reposition it in the correct spot. Refer to the image below.



Digium Card FXO Module

3. Place the PC on a stable surface, and open the chassis by pressing the buttons on the side and lifting the cover.



PC with Chassis Cover Removed

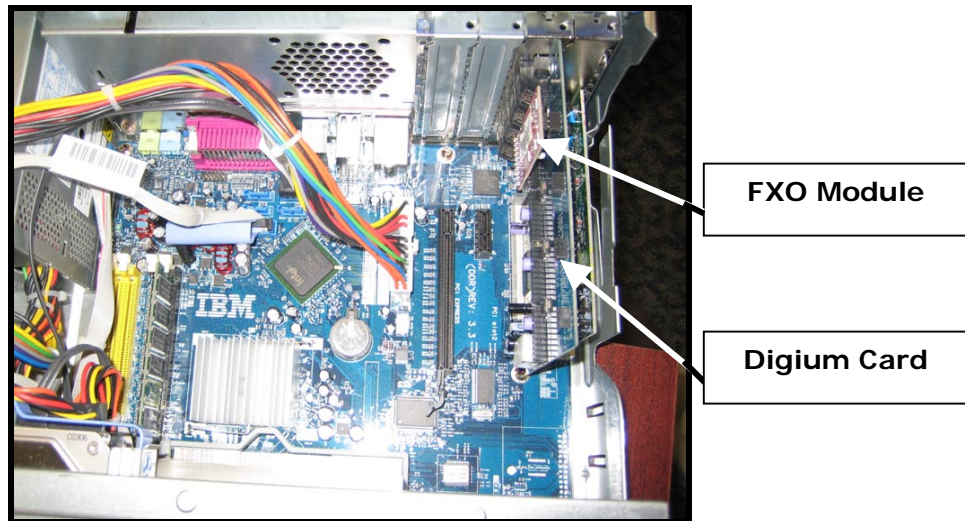
4. Find a hardware power connector inside the PC, and connect it to the card. The power connector is usually white with 4 holes.



NOTE: The hardware power connector must be long enough to reach the slot where the Digium card will be placed. If the power connector cannot reach, you will need an extension cord.

5. Remove the metal slot protector covering the slot in which you will place the Digium card.
6. Align the Digium card pins with those in the open slot, and press the card down until it snaps into place.

When facing the card, the FXO module should be positioned at the upper left-hand corner of the card, on the other side of the slot opening.



Overhead View of Installed Digium Card

7. Replace the chassis cover by snapping it into place.

Copyright © 2005, Inc. All rights reserved.