

Device Configuration Guide

LG LIP-6812/LIP-6830



All Rights Reserved

Copyright © 2005

The use, disclosure, modification, transfer, or transmittal of this work for any purpose, in any form, or by any means, without the written permission of the copyright holder, is strictly forbidden.

*VoiceDirector Device Configuration Guide
LG LIP-6812/LIP-6830*

Disclaimer

The content of this manual is subject to change without notice and should not be construed as a commitment by the manufacturer, distributor, or service provider. This manual is furnished for informational use only and the manufacturer, distributor, or service provider assumes no responsibility for any errors or inaccuracies that may appear herein.

Any services provided through this equipment are not intended to replace or be a substitute for primary line voice services or Plain Old Telephone Service ("POTS") and are not meant to provide guaranteed Automatic Number Identification or Automatic Location Information capabilities associated with 911 or E911 services or to permit access to 411 directory assistance services. The manufacturer, distributor, or service provider will not be liable for any damages, expenses, liabilities, risks, or harms arising out of or related to the services provided through this equipment.

04.24.2006

Table of Contents

1. LG LIP-6812/LIP-6830	1
STEP 1 – SET UP THE ACCOUNT	1
STEP 2 - LOGGING INTO THE WEB CONFIGURATION INTERFACE....	1
STEP 3 – CONFIGURING THE SIP PROXY SETTINGS	2
STEP 4 – RESTARTING THE PHONE	3

1. LG LIP-6812/LIP-6830

IMPORTANT

You must have SIP software version 1.1.18s or above in order for the LIP-6812/LIP-6830 to interoperate with VoiceDirector.

STEP 1 – SET UP THE ACCOUNT

Make sure you have an account on the VoiceDirector server to which you are connecting.

STEP 2 - LOGGING INTO THE WEB CONFIGURATION INTERFACE

To log into the phone's Web Configuration Interface:

1. Press the **Settings** key on the LIP-6812/LIP-6830 phone.
The phone displays the Configuration Menu.
2. Press the **1** key.
The phone displays the Network Configuration Menu
3. Press the **2** key.
The phone displays the IP address.

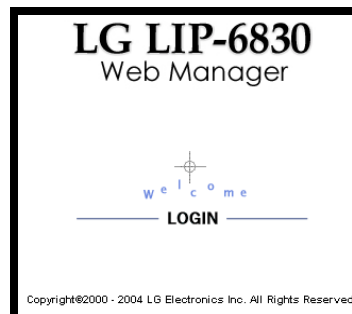


NOTE: If you are using the LIP-6830 phone, you can obtain the IP address by pressing the **INFO** button.

4. Write down that IP address.
5. Launch Microsoft® Internet Explorer.
6. In the **Address** bar, enter **http://**, followed by the IP address you wrote down in step 2 above, followed by **:8000**.

For example, if your IP address is 192.168.1.100, you would enter **http://192.168.1.100:8000** in the **Address** bar.

7. Press the **Enter** key on your keyboard, or click the **Go** button.
A splash screen displays.



LG LIP-6812/6830 Splash Screen
(The screen above displays for both the LIP-6812 and LIP-6830. The only difference is the title at the top of the page.)



Login Screen

(This is the typical Windows XP login pop-up. Windows 2000 and 98 will look different, but the fields will remain the same.)

8. Click **LOGIN**.
A login pop-up displays.
9. In the **User name** field, enter **private**.
10. In the **Password** field, enter **lip**.
11. Click the **OK** button.
You are now logged into the phone's Web Configuration Interface.

STEP 3 – CONFIGURING THE SIP PROXY SETTINGS

In order to use the VoiceDirector service, you must have a VoiceDirector account number and authentication password. If you do not have this information, please contact your System Administrator.

By default, you can configure up to two (2) extensions, as shown in the screen capture below. The left column is for the 1st extension, and the right column is for the 2nd extension.

To enter the account number and password:

1. On the Web Configuration Interface page, click the **VoIP Configuration** link in the sidebar menu on the left side of the page.
The VoIP Configuration page displays. See the screen on the following page.
2. In the **Proxy Address** field, enter your VoiceDirector IP Address.
3. In the **Name** field, enter your VoiceDirector SIP Username.
4. In the **Authentication Name** field, enter your VoiceDirector SIP Username.
5. In the **Authentication Password** field, enter your SIP password.
6. In the **Outbound Proxy Address** field, enter your VoiceDirector IP Address.
7. Keep the default values for all other fields.
8. Click the **Change** button.
The values are saved, and the browser page displays the message, "VoIP configuration is changed successfully!"

LIP-6830
Web Manager
(SIP)

VoIP Configuration

LAN Configuration

Call Preferences

Routing Table Configuration

Phone Information

Phone Settings

Phone Book

Programmable Key

Call Log


Network Time Configuration

Upgrade Configuration

QoS Configuration

Load Default Configuration

Reboot



VoIP Configuration

	<input type="text" value="Proxy Address"/>	<input type="text" value="Proxy Address"/>
	<input type="text" value="Proxy Port"/>	<input type="text" value="Proxy Port"/>
	<input type="text" value="Display Name"/>	<input type="text" value="Display Name"/>
LINE 1	<input type="text" value="Name"/>	LINE 2
	<input type="text" value="Authentication Name"/>	
	<input type="text" value="Authentication Password"/>	
	<input type="text" value="Registration Status"/>	

Outbound Proxy Address	<input type="text" value="Proxy Address"/>
Backup Proxy Address	<input type="text"/>
VMS Address	<input type="text"/>
Proxy Registration	<input type="text" value="enable"/>
Registration Timer	<input type="text" value="3600"/>
Local UDP Port	<input type="text" value="5060"/>
Codec Priority 1	<input type="text" value="G729"/>
Codec Priority 2	<input type="text" value="G723"/>
Codec Priority 3	<input type="text" value="PCMU"/>
Codec Priority 4	<input type="text" value="PCMA"/>

[Return to the Site Map](#)

VoIP Configuration Page

(The screen above displays for both the LIP-6812 and LIP-6830. The only difference is the in the upper left-hand corner of the page.)

9. Click the **Reboot** link at the bottom of the sidebar menu.
10. On the Reboot page, click the **Reboot** button.

NOTE

When you click the **Submit** or **Save** buttons, you must wait for the browser to refresh before continuing.

STEP 4 – RESTARTING THE PHONE

To restart your phone and activate the settings changes:

1. Click the **Reboot** link at the bottom of the sidebar menu.
The browser displays, "Click to restart phone."
2. On the Reboot page, click the **Reboot** button.
3. Once the phone restarts, close the browser window.

Congratulations! You are now ready to start enjoying VoiceDirector's superior quality on your LIP-6812/LIP-6830 phone.